

# WINDSTREAM SD-WAN

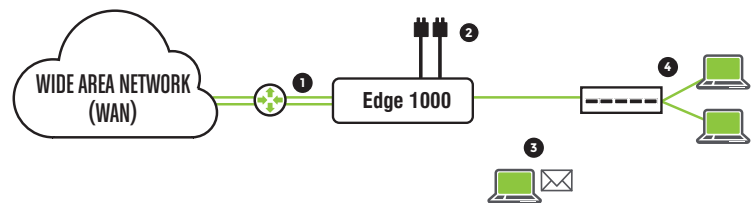
# EDGE 1000 INSTALLATION AND QUICK START GUIDE

Thank you for choosing Windstream SD-WAN. Your zero-touch software-defined installation experience starts here.



## INSTALLATION INSTRUCTIONS

Follow the steps below to install the Edge 1000 in a basic configuration. For advanced configurations, refer to the Edge Activation Guide available online at <https://www.earthlink.com/edge-1000>



### 1. Connect the Edge to an available Internet connection:

- Connect the Internet Ethernet cable to the port labeled GE5. Other Internet or MPLS connections should use ports GE6 through GE8
- If you have a 4G-LTE USB modem, insert it into any of the USB ports
- For a WAN connection with a SFP Plus port, refer to the Activation Guide at <https://www.earthlink.com/edge-1000>

### 2. Connect the power cords:

- Plug both AC power cords into the two removable power modules located on the back of the Edge
- Note: An alarm sounds until BOTH power modules are plugged into the active AC power

- If the Edge does not power on immediately, remove the bezel using the enclosed cylindrical key and press the power button (located on the right-hand corner of the front panel on the Edge)
- See the Activation Guide for more details.
- Verify that the status LED on the front of the Edge is green

### 3. Click on activation link in email from your IT Administrator or Windstream for additional activation

### 4. Connect local devices such as desktops, phones, and switches to the available GE ports that are configured as LAN ports, 1 through 4 by default



**IF YOU NEED HELP, CONTACT WINDSTREAM SD-WAN TECHNICAL SUPPORT AT 877-737-5249.**

Should a Customer require Windstream to make configuration changes to the Service on their behalf post installation, standard support time and/or Professional Services charges may apply.

